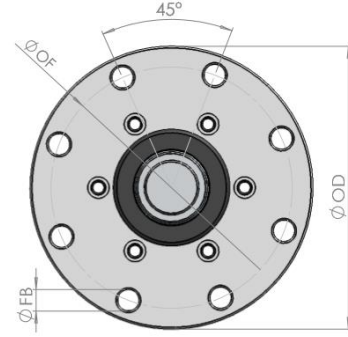
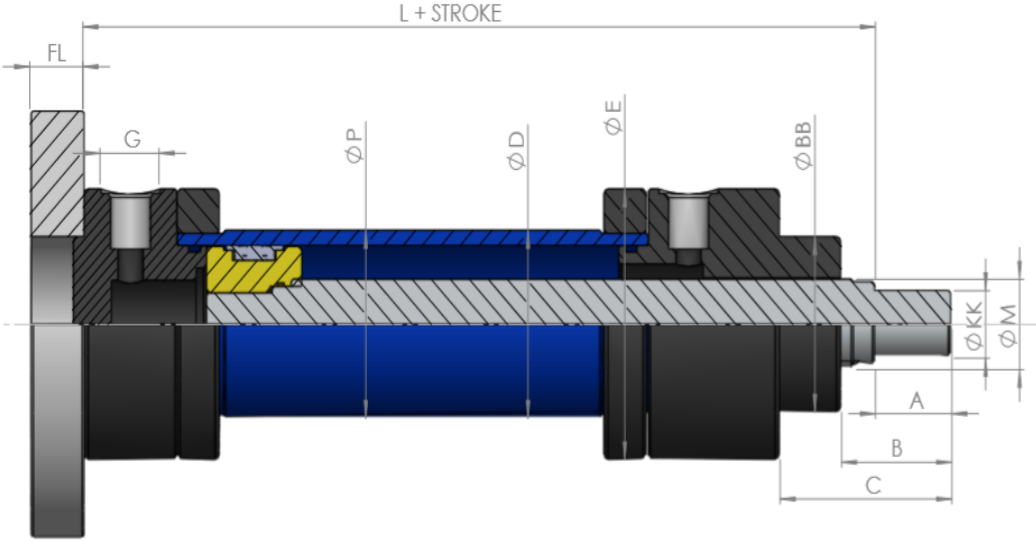
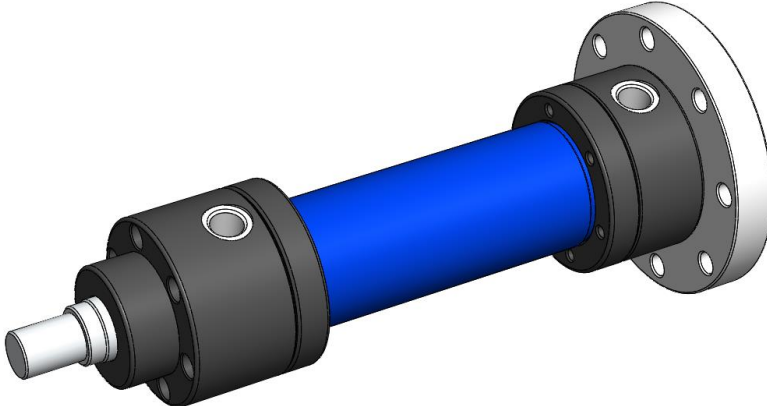


CETOP R58 H/ISO 6020/1

Çift tesirli hidrolik silindir KS370 A1 serisi (normal milli)



| ØP | Ø32 | Ø40 | Ø50 | Ø63 | Ø80 | Ø100 | Ø125 | Ø140 | Ø160 | Ø180 | Ø200 |
|----|-------------|-------------|-------------|-------------|-------------|-------------|-------------|-------------|-------------|-------------|-------------|
| M | 18 | 22 | 28 | 36 | 45 | 56 | 70 | 80 | 90 | 100 | 110 |
| A | 18 | 22 | 28 | 36 | 45 | 56 | 63 | 75 | 85 | 90 | 95 |
| B | 31 | 35 | 42 | 52 | 63 | 76 | 86 | 100 | 110 | 120 | 125 |
| C | 50 | 54 | 66 | 81 | 99 | 113 | 123 | 140 | 151 | 165 | 170 |
| BB | 40 | 50 | 60 | 70 | 85 | 106 | 132 | 145 | 160 | 185 | 200 |
| D | 40 | 50 | 60 | 75 | 95 | 115 | 145 | 160 | 180 | 210 | 245 |
| E | 68 | 78 | 98 | 108 | 129 | 158 | 186 | 210 | 240 | 255 | 296 |
| G | R1/4 | R3/8 | R1/2 | R1/2 | R1/2 | R3/4 | R3/4 | R3/4 | R1 | R1 | R1 |
| KK | M14x 1.5 | M16x 1.5 | M20x 1.5 | M27x 2.0 | M33x 2.0 | M42x 2.0 | M48x 2.0 | M56x 2.0 | M64x 3.0 | M72x 3.0 | M80x 3.0 |
| L | - | - | - | - | - | - | - | - | - | - | - |
| OD | 110 | 125 | 148 | 170 | 195 | 238 | 272 | 296 | 316 | 365 | 385 |
| OF | 92 | 106 | 126 | 145 | 165 | 200 | 235 | 260 | 280 | 320 | 340 |
| FL | 16 | 16 | 20 | 25 | 32 | 32 | 32 | 35 | 36 | 40 | 40 |
| FB | 9 | 9 | 11 | 13 | 17.5 | 22 | 22 | 22 | 22 | 26 | 26 |